



RESIDENTIAL

SALES | LETTINGS | PROPERTY MANAGEMENT



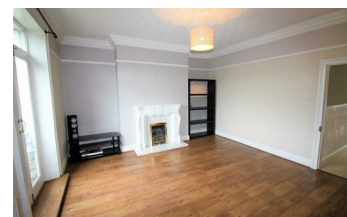
638 Manchester Road, Huddersfield, HD7 5QY

Offers Over £85,950



SOLD Offered For Sale is this Charming, deceptively spacious, stone built, over dwelling which retains many of the original character features including original cornice and ceiling rose, providing well appointed accommodation set over three floors. Situated close to all local amenities, bus routes, schools and delightful countryside walks, good rail links to Leeds/Manchester. The property Comprises of: Entrance door leading to a reception hallway, spacious lounge with Juliet balcony, lower ground floor leadings to a breakfast kitchen with rear door access to under- building. To the first floor landing, there are two bedrooms and contemporary bathroom suite in white. Externally: Flagged area to front with off street parking, stunning views over looking the country side to the rear. An ideal purchase for a first time buyers, viewings are strongly advised. Tel ADM Residential on Tel 01484 644555 to arrange a viewing, Or Txt office mobile on 07919915436 .

- OVER DWELLING
- LOUNGE WITH VIEWS
- TWO BEDROOMS
- NEWLY DECORATED
- STONE BUILT TERRACE
- BREAKFAST KITCHEN
- MODERN BATHROOM



55 Market Street, Milnsbridge, Huddersfield, HD3 4HZ
T: 01484 644555 | E: sales@admresidential.co.uk
www.admresidential.co.uk

